



International Blackcurrant Conference 2016

Scott Garnett



Who are ICL?

Some of our Results

Soil Health

Reducing Fertiliser Leaching

What have we lost?





DEAD SEA
WORKS LTD.



everris.



ICL SPECIALTY
FERTILIZERS

ROTEM AMFERT
NEGEV LTD.



FERTILIZERS &
CHEMICALS LTD.



ICL Specialty
Fertilizers



ICL NEGEV Phosphate Mining





ICL DEAD SEA WORKS Potassium production





ICL Spain Potassium mining





ICL UK Potassium production

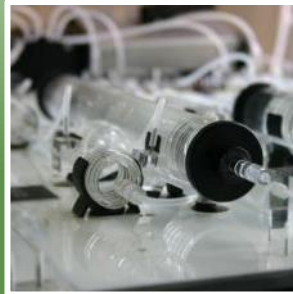
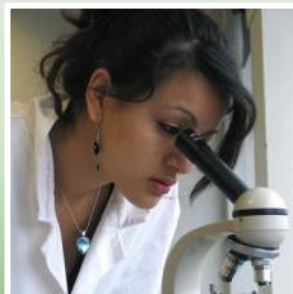


Raw minerals
processing

Minerals
Fertilizers

Innovation
Formulation

Technologies
Products & Solutions



- Water conservation products → H2Flo

products:

- biostimulants
- adjuvants
- surfactants
- wetting agents
- water conditioners
- tankcleaners





100% ETo – no soil surfactant



75% ETo + H2Flo



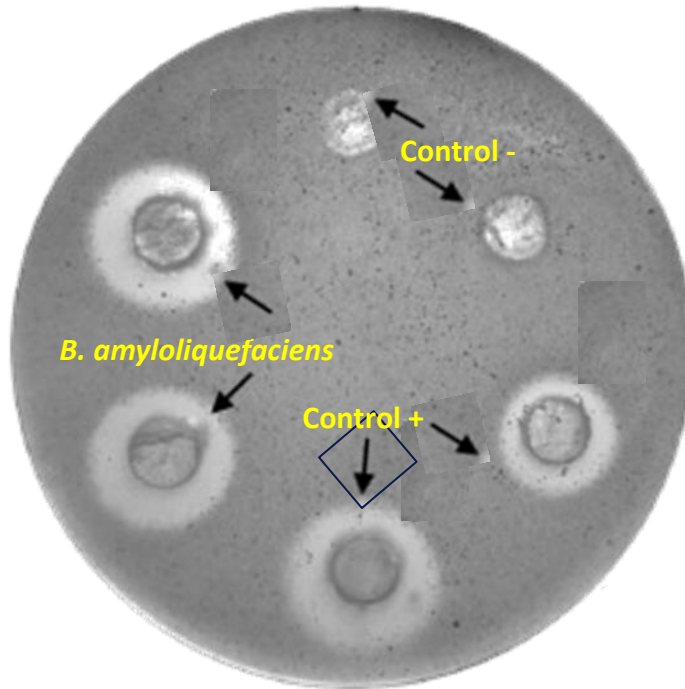
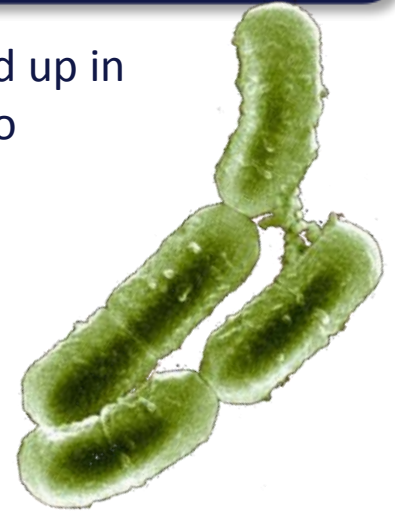
75% ETo – no soil surfactant

Pictures by Freedom Ag Research, LLC (2014)





IT45 improves plant nutrition by **solubilizing nutrients** that are locked up in the soil or growing medium. This is particularly evident with regard to phosphorus and metallic ions.



PO₄H²⁻ solubilization

Improving root structure



SOIL HEALTH

Encourage Soil Organisms



In a teaspoon full of soil contains more life than there are people on the planet

A teaspoonful of soil can contain over 1,000,000,000 microbes



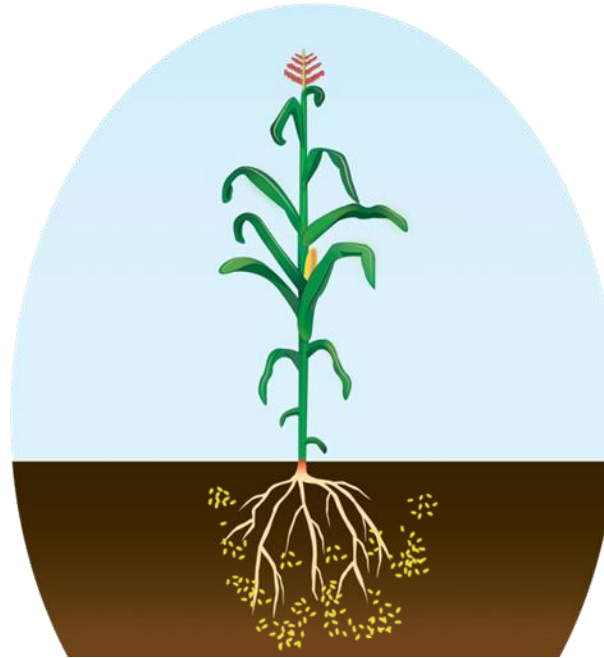
Under your feet



- 20-25,000 species bacteria
- 5-10,000 species fungi
- 100-200 species nematodes
- Protozoa (flagellates, amoeba and ciliates)
- Earthworms
- Mites
- Collembolan
- Algae
- Lichens
- Viruses
- Archae
- Actinobacteria
- Mycorrhiza
- Ants
- Termites
- Millipedes
- Centipedes
- Springtails

Root exudates (the product of photosynthesis) are rich in sugars. They attract and nourish the bacteria of the rhizosphere.

The number of Bacteria present increases with the growth of the roots



SYMBIOSIS: bacteria are fed by the plant and in exchange they solubilise nutrients and stimulate the growth of roots. Some can also form a protective shield.

Do we use Bacteria or Fungi?



- Woody Stem
Mainly a Fungi root zone



- Non Woody Stem
Mainly a Bacteria root zone



UNTREATED

After 3 weeks of irrigation



H2Flo

3 hours of drip. water immediately goes into the soil. 22

Vegetables

- -49% Sodium
- -16% Potassium
- -24% Magnesium
- -46% Calcium
- -27% Iron
- -76% Copper

Fruit

- -29% Sodium
- -19% Potassium
- +2% Phosphorous
- -16% Magnesium
- -16% Calcium
- -24% Iron
- -20% Copper
- -27% Zinc

The image features a dark blue horizontal band across the center. The background is white with several thick, curved lines in various colors (red, green, purple, brown, teal) that sweep across the frame. In the top-left and bottom-right corners, there are areas with fine, light gray diagonal lines.

Questions?